



# Power Saw Blade Failure

---

- **What:** Partner K-12 power saw blade failure (Target EH series 14” hand-Held High Speed DRY/WET cutting Diamond Blade)
- **When:** Saturday 25 APR 09 (approx. 1430)
- **Where:** 506 ECES/CEF, Kirkuk Regional Air Base, Iraq
- **Background:** Personnel were cutting wood (fallen dead trees) using chain saw and Partner K-12 (*blade identified above*)



# Power Saw Blade Failure- Results

- K-12 blade failed, 2” x 2” piece of blade propelled towards members’ upper right foot through his combat boot aft of the protective toe
- Member suffered severed artery, veins, cut tarsal bone, severed several tendons
- Two accompanying personnel (and member) took immediate action to control bleeding (severe), loaded member in Rescue Vehicle, radioed in to notify EMEDS, drove member (expeditiously) to EMEDS
- Member has prior Navy Corpsman experience, other members: EMT-B, 1<sup>st</sup> Responder
- Excellent quick actions by two accompanying members, kept calm!
- Member underwent immediate surgery, recovered, flown out by fixed wing MedEvac (C-130 Hercules) to Al Udeid for further treatment 72 hours later



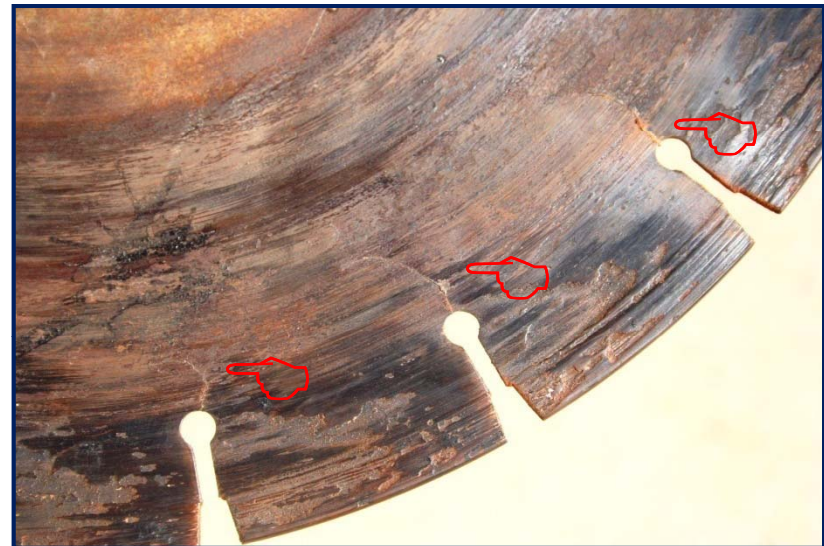
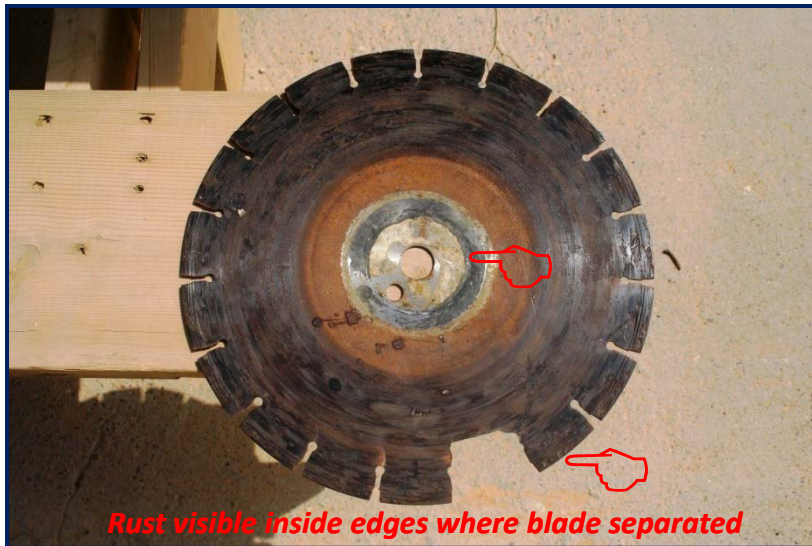


# Power Saw Blade Failure- Inspection

- Inspection of the blade revealed multiple cracks in the blade
- Rust was visible on inside edges where blade failed/separated indicating cracks were present for sometime prior to the cutting operation
- Further inspection revealed other blades with same cracks
- Blades were rusty, warning labels completely worn off
- The warning label was worn off from the affected blade and several others



# The Blade





# Power Saw Blade Failure- Recommendations

- All personnel in AOR and CONUS verify adequate inspection checklists are available AND UTILIZED for all power equipment
- Conduct spot-checks to verify effective inspections are carried out
- Refresher training to insure personnel use the right tool (and blade) for the right job
- Identify, report, and replace potentially defective equipment ASAP
- Remove saw blades from service if they:
  - Do not have a readily available legible and understandable set of instructions and warning cautions
  - Appear unserviceable or environmentally compromised (rust, worn) or are cracked
  - Do not match saw manufacturer recommended RPM and pairing
- Ensure personnel do not become complacent in their daily inspection of vehicles & equipment